

- **CO35R** 36-1/4"L x 33"D x 61-5/8"H
- **CO45R** 47-1/4"L x 33"D x 61-5/8"H
- **CO55R** 59-1/4"L x 33"D x 61-5/8"H
- **CO65R** 71-1/4"L x 33"D x 61-5/8"H

### Included

- Breeze~E (Type-II) w/ EnergyWise s/c refrigeration
- 4"D removable rear wall spacer (not included in depth dimension)
- Blue Fin coated coil
- Compressor air front intake, rear discharge. Front panel cannot be blocked.  
Must remain 4" from wall
- Condensate pan (self-contained refig. only)
- Integrated average product temperature of 40°F or less
- LED 3500K top light(s)
- One piece formed ABS plastic tub
- One year parts & labor; 5 year compressor warranty
- Removable deck pans provide complete access to evaporator coil & refrigeration connections
- Shelving removable and adjustable on 1" centers



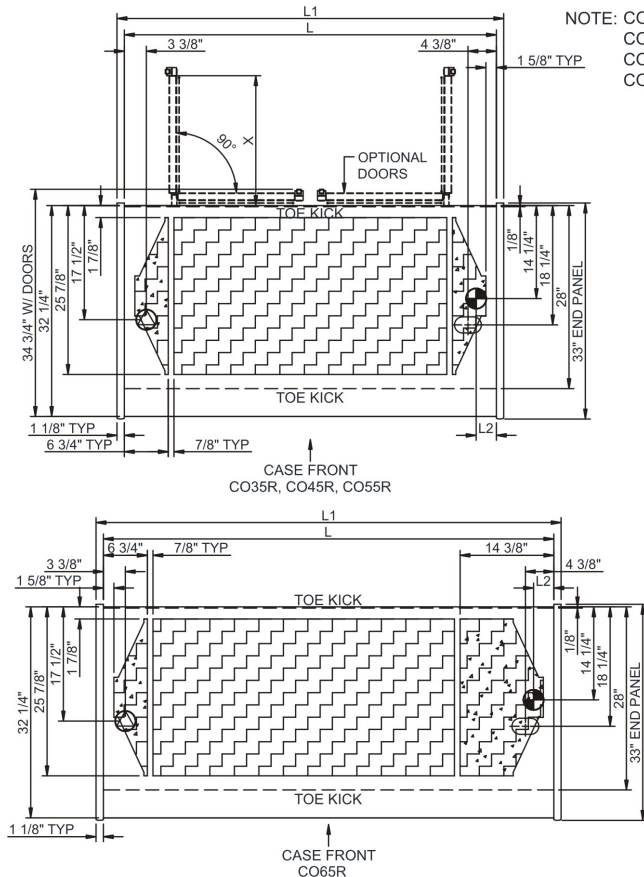
Specify	Standard Features	Additional Options
<b>EXTERIOR COLOR</b>	• Laminated (non-premium) Confirm pattern/grain direction	• Laminated (premium) Confirm pattern/grain direction • Stainless steel (includes lower front panel)
<b>INTERIOR COLOR</b>	• Black	• Stainless steel
<b>LWR PERFORATED FRNT PANEL</b>	• Painted - Black	• Stainless steel (w/stainless ext. only)
<b>BASE</b>	• Casters w/ levelers	• Levelers (only) • Seismic levelers
<b>END PANEL LEFT</b>	• Full end panel w/mirror interior (vinyl edge matches interior color)	• Cutaway end panel (vinyl edge matches interior color) • No end panel w/ synchronized defrost
<b>END PANEL RIGHT</b>	• Full end panel w/mirror interior (vinyl edge matches interior color)	• Cutaway end panel (vinyl edge matches interior color) • No end panel w/ synchronized defrost
<b>EXTERIOR BACK PANEL</b>	• Solid back panel, black	• Rear loading hinged doors, locking • Solid back panel, stainless steel
<b>SHELVING</b>	• Metal shelves (2), non-lighted	• Metal shelves (2), lighted (LED 3500K)
<b>ELECTRICAL CONNECT</b>	• 6' Straight blade power cord (base exit)	• 6' Locking blade power cord (base exit) • 6' Locking blade power cord (top exit) • 6' Straight blade power cord (top exit) • Electrical leads (remote)
<b>REFRIGERATION</b>	• Breeze~E (Type-II) w/ EnergyWise s/c refrigeration	• Note: Remote doesn't incl Conds unit. Floor drain reqd. 1 • Remote w/thermostat, solenoid & TXV
<b>MISCELLANEOUS</b>		• Case height wall spacer bracket (specify BL or SS) • Roll-down security cover, locking (Requires two end panels (full or cutaway) per case) • Second year parts & labor warranty (excludes compressor)
<b>ACCESSORIES</b>		• Clean Sweep® coil cleaner (n/a w/remote) • Night curtain, retractable, non-locking • Price tag molding (matches interior color) • Removable solid security cover, locking

Option Notes: 1 - See tech spec for load reqmts

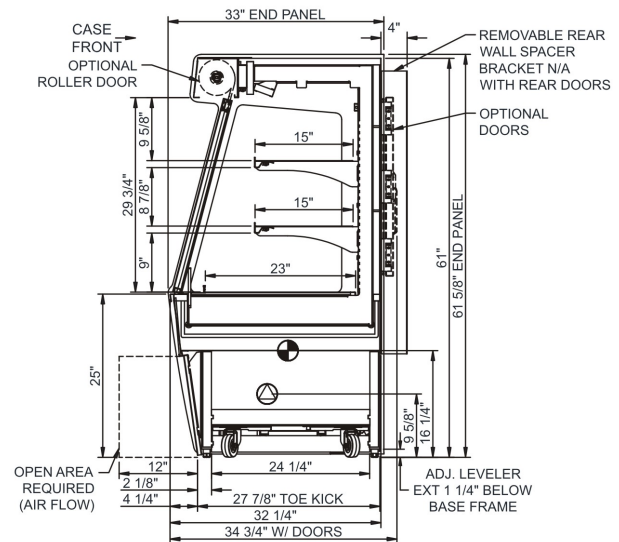
**Intended Environment:** Type II - Designed to operate in ambient conditions of 80°F and 60% relative humidity unless noted otherwise in system information below.

Zone	Intended Product To Be Displayed	Warmest Avg Prod Temp ° F
1	Packaged refrigerated products	40

**PLAN VIEW**



**SIDE VIEW**



**NOTE: ALL DIMENSIONS APPROXIMATE**

- ELECTRICAL JUNCTION BOX (SUPPLIED WITH 6\"/>

Model Technical Specifications														
Model	L"	L1"	L2"	System Circuit Volts			Phs	Freq	Amps ***	Watts	Wires	NEMA Plug	SST	Conv. Rack BTU/H
CO35R	34.00	36.25	3.13	Remote(Type I)	Circuit #1	110-120	1	60	1.15	55	2+G	Leads Multiple	20.00	2700
				Remote(Type II)	Circuit #1	110-120	1	60	1.15	55	2+G	Leads Multiple	20.00	3283
				Self-Contained (R449A)	Circuit #1	110-120	1	60	14.66	1,239	2+G	5-20P or L5-20P	N/A	N/A
CO45R	45.00	47.25	3.13	Remote(Type I)	Circuit #1	110-120	1	60	1.20	106	2+G	Leads Multiple	20.00	3499
				Remote(Type II)	Circuit #1	110-120	1	60	1.20	56	2+G	Leads Multiple	20.00	4277
				Self-Contained (R449A)	Circuit #1	110-120	1	60	15.32	1,289	2+G	5-20P or L5-20P	N/A	N/A
CO55R	57.00	59.25	3.13	Remote(Type I)	Circuit #1	110-120	1	60	1.51	136	2+G	Leads Multiple	20.00	4363
				Remote(Type II)	Circuit #1	110-120	1	60	1.51	136	2+G	Leads Multiple	20.00	5335
				Self-Contained (R449A)	Circuit #1	110-120	1	60	16.00	1,508	2+G	5-20P or L5-20P	N/A	N/A
CO65R	69.00	71.25	3.13	Remote(Type I)	Circuit #1	110-120	1	60	1.27	89	2+G	Leads Multiple	20.00	5162
				Remote(Type II)	Circuit #1	110-120	1	60	1.27	89	2+G	Leads Multiple	20.00	6329
				Self-Contained (R449A)	Circuit #1	208-240	1	60	9.52	1,725	2+G	6-20P or L6-20P	N/A	N/A

\*\*\* Does not include electric defrost on freezer models.

**Regulatory Approvals:**

All Models  
 Accordance with AHRI Std 1200  
 ETL Listed to UL 471  
 ETL Listed to CAN/CSA 22.2 No. 120  
 ETL Sanitation to NSF/ANSI 7



In Accordance with  
**AHRI Std 1200**

**DOE 2017**  
 Energy Efficiency  
 Compliant

**Important Notes:**

- ELECTRICAL NOTE: If GFCI is required, a GFCI breaker MUST be used in lieu of a GFCI receptacle
- Performance issues (product temperatures, water on floor, etc.) caused by adverse conditions are not covered by warranty.
- Keep unit at least 15' from exterior doors, overhead HVAC vents, or any air curtain disruption.
- End panels must be tightly joined or kept at least 6" away from any structure to prevent condensation.
- Do not expose unit to direct sunlight or any heat source (ovens, fryers, etc.).
- Keep at least 8" of clearance above unit for air discharge (self-contained only).
- Tile floors, low ceilings, or small rooms will increase noise level. Remote refrigeration recommended.

**⚠ WARNING:** This product can expose you to chemicals, including Urethane (Ethyl Carbamate), which are known to the State of California to cause cancer and birth defects or other reproductive harm. For more information go to [www.P65Warnings.ca.gov](http://www.P65Warnings.ca.gov).